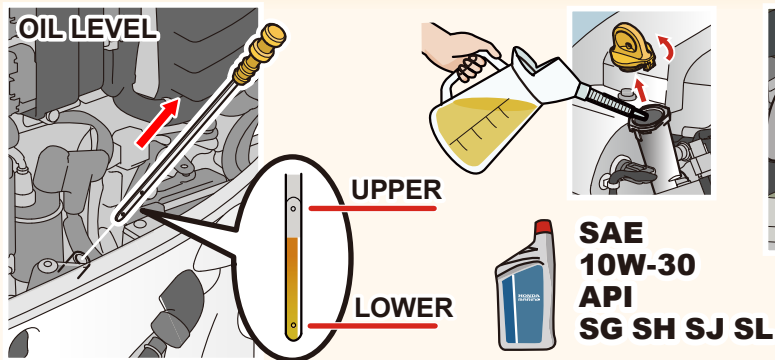




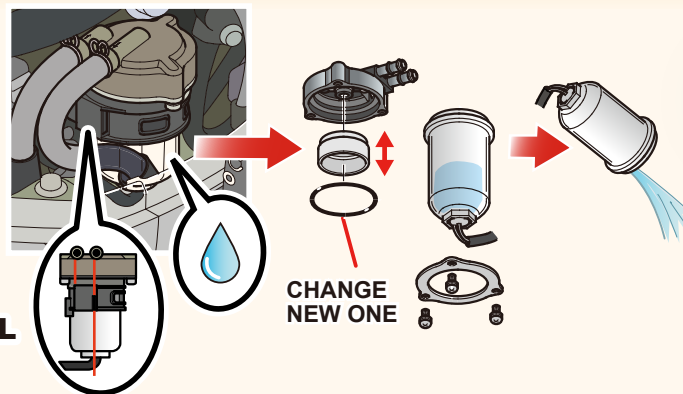
※ Read and understand the Owner's Manual before operating the Outboard motor.

Befor Operation Check

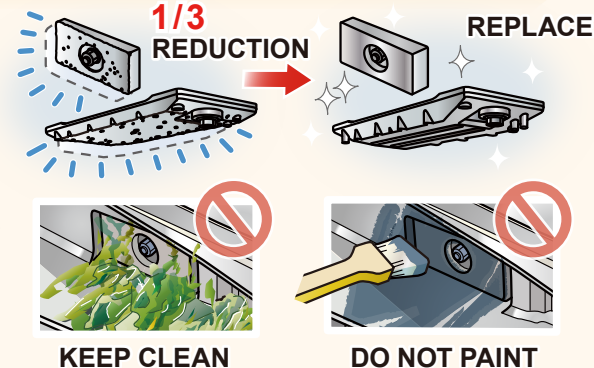
1 Engine Oil



2 Water Separator

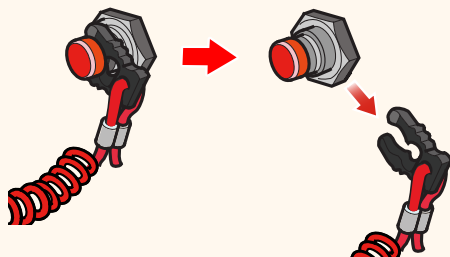


3 Anode Metal

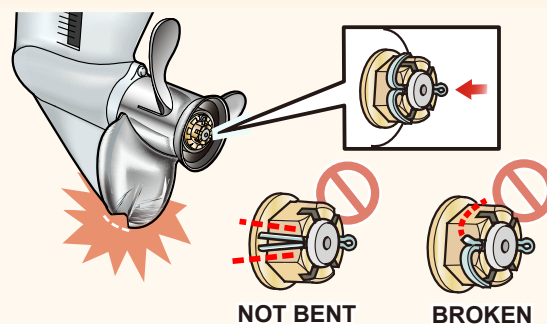


4 Emergency Stop Switch

Make Sure The Engine Stops By Pulling Crip From The Emergency Stop Switch

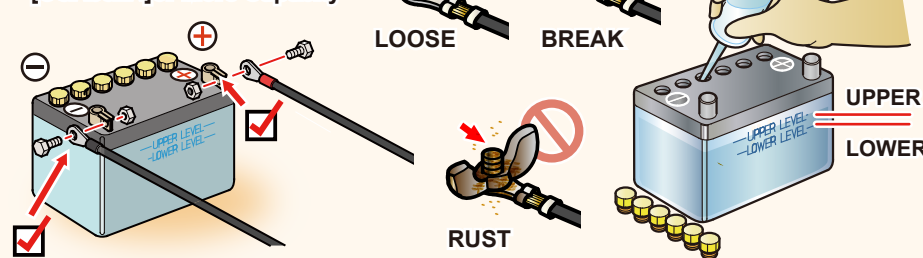


5 Propeller & Cotter Pin



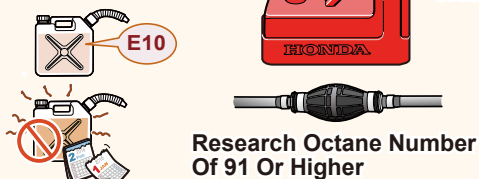
6 Battery

12V-55Ah/5HR (65Ah/20HR)
[CCA582A] or More Capacity



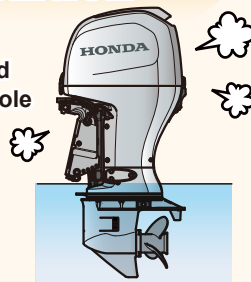
7 Fuel Line

Amount Of Gasoline
Fuel Hose Connection
Fuel Hose Bending



8 Condition

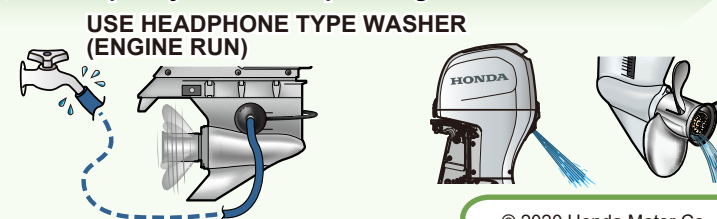
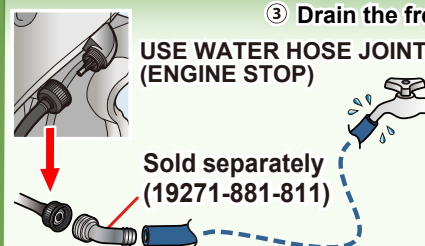
Engine Start
Engine Sound
Water Pilot Hole



After Use

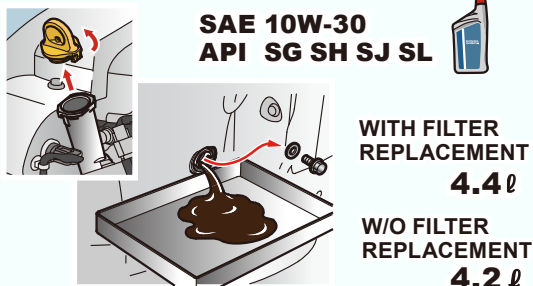
For a long time to use.

- 1 Cool down the engine by idling for few minutes.
- 2 **Flush The Engine For At Least 10minutes**
- 3 Drain the fresh water completely. Do not tiltup the engine soon.

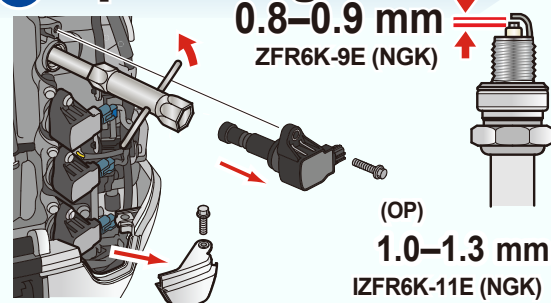




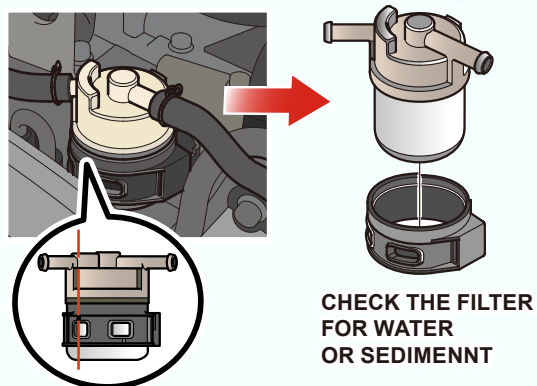
1 Engine Oil Change



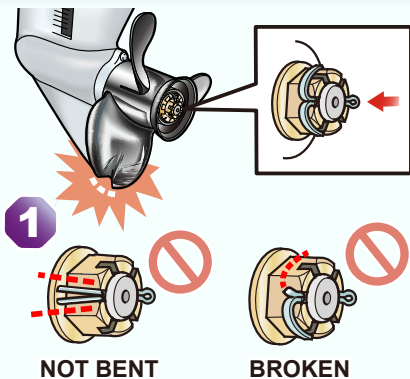
2 Spark Plug



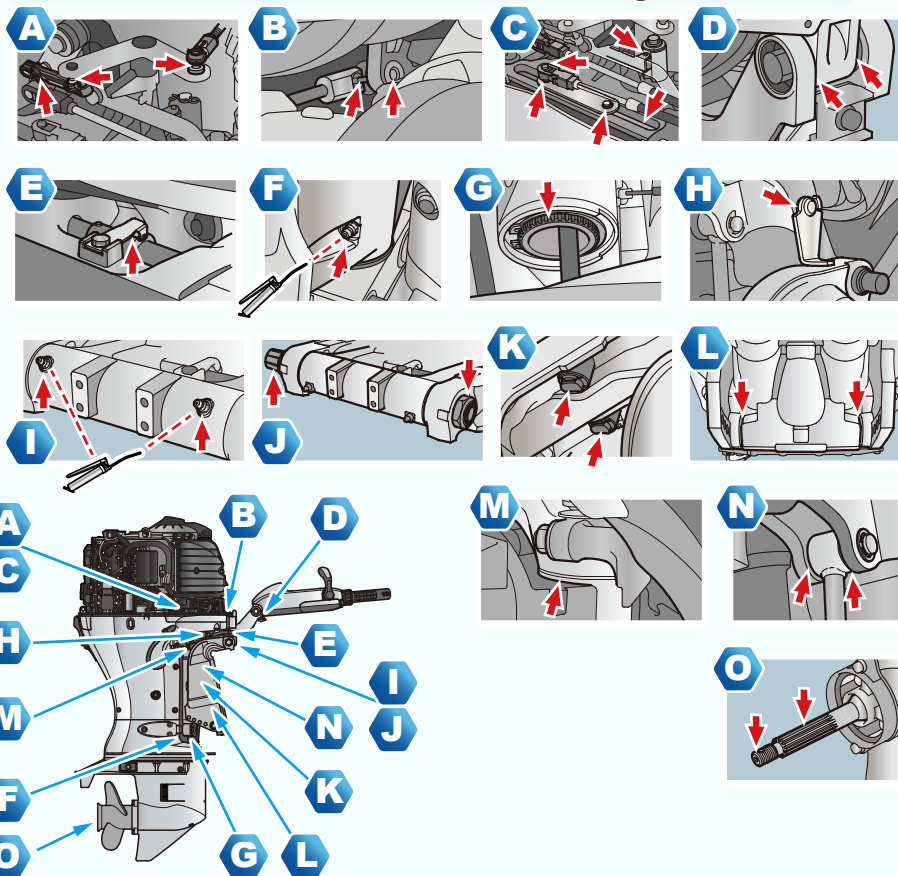
3 Fuel Filter (Lo)



4 Propeller & Cotter Pin



5 Grease



Before Operation
Regular Service

Maintenance Schedule : Check : Change : Clean : Check-adjust

	Regular Service Period	Before each use	First month or 20 Hours	Every 6 months or 100 Hours	Every year or 200 Hours	Every 2 years or 400 Hours
1 1 Engine oil						
2 2 Spark plug					(OP)	(OP)
2 2 Water separator						
3 3 Fuel filter (Lo)						
3 3 Anode (Outer)						
4 4 Emergency stop switch						
5 4 Propeller Cotterpin						
6 6 Battery						
5 5 Grease						
7 7 Fuel line						

Inspection Items By The Dealer

	Every 2 years Replace if necessary
Fuel line	
Spark plug	(OP)
Valve clearance	
Idle speed Throttle linkage	
Engine oil filter	Take the outboard motor to a Honda servicing dealer.
Breather tube Thermostat Water pump	
Bolts and nuts	
Gear case oil	
Fuel filter (Hi)	
Power Trim/Tilt	
Shift cable	
Anode (Inner)	

